

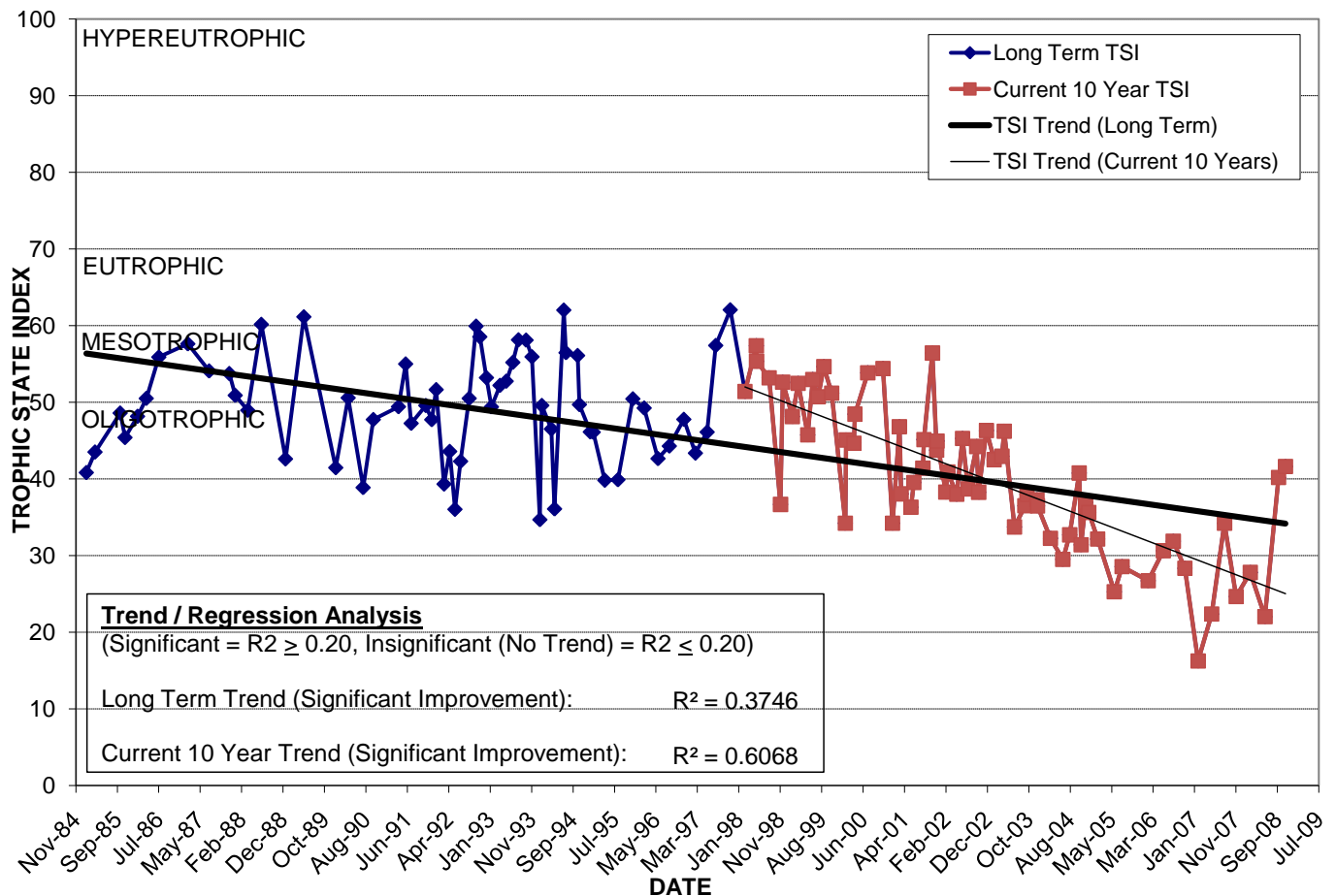
# LAKE BALDWIN

Location: Lat N **28° 34' 21.7"** Long W **81° 19' 19.2"**  
 Section **16** Township **22S** Range **30E**  
 Lake Surface Area: **196 acres**  
 Lake Volume: **122,895,700 ft<sup>3</sup>**  
 Shoreline Length: **10,979 ft (3,346 m)**  
 Mean Depth: **14.4 ft (4.4 m)**  
 Maximum Depth: **26.0 ft (7.9 m)**

Water Management District: **St. Johns River**  
 Drainage Code: **SJ-LE-2**  
 Drainage Basin Area: **761 acres**  
 Land Use: **9% Res, 10% Com, 81% Vac (est.)**  
 Drain Wells: **No** Aeration: **No**  
 Lake Origin: **Natural**  
 Grass Carp (*Ctenopharyngodon idella*): **No**

2008 Water Quality Data		TSI Ranking: 11 (out of 95 lakes)			
	Total Phosphorus (mg/l)	Total Nitrogen (mg/l)	Secchi Depth (m)	Chlorophyll-a (mg/m <sup>3</sup> )	Trophic State Index
Minimum	0.009	0.55	1.5	1.5	22
Maximum	0.018	0.72	4.4	5.1	42
Average	0.013	0.64	2.6	2.9	33

**Long-Term Trophic State Index Values and Linear Regression Trend Line**



**Comments:** Public access and boat ramp in Peeples Park off Lakemont Ave. on west shoreline. Baldwin Park borders the lake.

**Location:** In Baldwin Park subdivision, on the old Naval Training Center property east of Leahy Dr. and north of Holland St.