

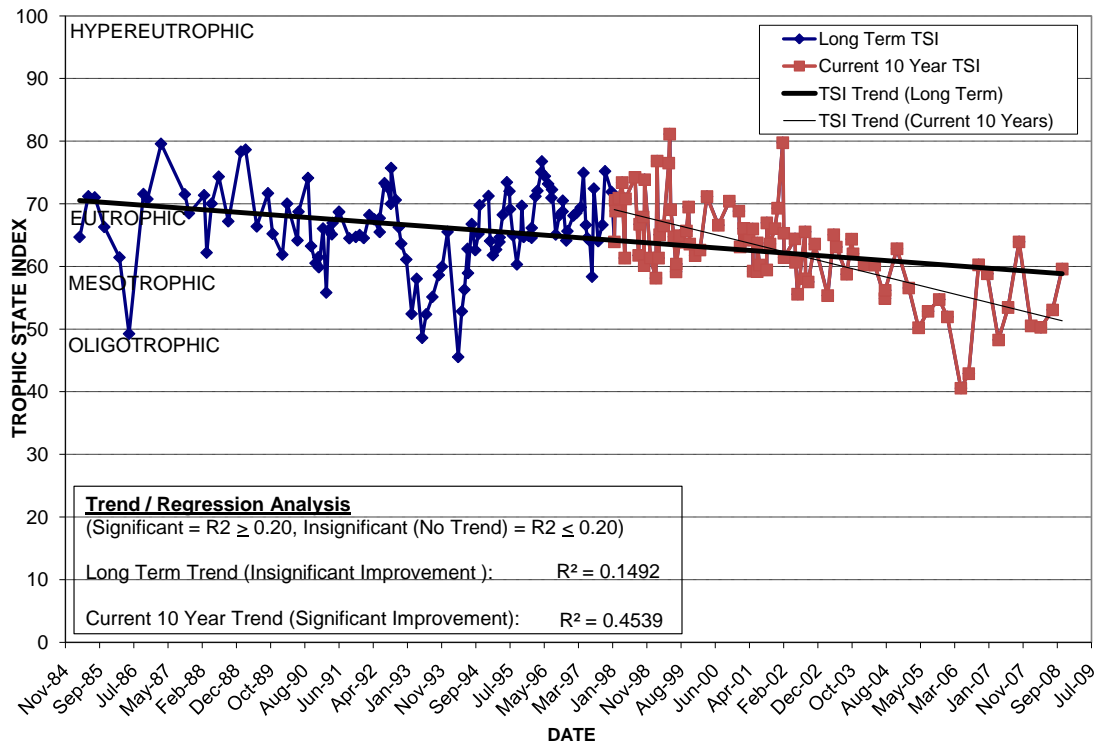
CLEAR LAKE

Location: Lat **N 28° 31' 23.5"** Long **W 81° 24' 32.8"**
 Section **4** Township **23S** Range **29E**
 Lake Surface Area: **358 acres**
 Lake Volume: **200,942,280 ft³**
 Shoreline Length: **42,116 ft (12,837 m)**
 Mean Depth: **12.9 ft (3.9 m)**
 Maximum Depth:

Water Management District: **South Florida**
 Drainage Code: **KR-SC-10**
 Drainage Basin Area: **1,823 acres**
 Land Use: **30% Res, 16% Com, 32% Vac**
 Drain Wells: **No** Aeration: **No**
 Lake Origin: **Natural**
 Grass Carp (*Ctenopharyngodon idella*): **Yes**

| 2008 Water Quality Data | | TSI Ranking: 60 (out of 95 lakes) | | | |
|-------------------------|----------------------------|-----------------------------------|---------------------|--------------------------|------------------------|
| | Total Phosphorus (mg/l) | Total Nitrogen (mg/l) | Secchi Depth (m) | Chlorophyll-a (mg/m3) | Trophic State Index |
| Minimum | 0.021 | 0.88 | 0.7 | 11.6 | 50 |
| Maximum | 0.031 | 1.16 | 1.6 | 15.8 | 60 |
| Average | 0.024 | 1.00 | 1.2 | 12.9 | 53 |

Long-Term Trophic State Index Values and Linear Regression Trend Line



Comments: Clear Lake has a long history of water quality problems and studies. A large-scale fish removal project in 1992 appears to have resulted in dramatic, but short-lived improvements in water quality. Projects implemented include large-scale stormwater treatment projects, reestablishment of aquatic vegetation and recent construction of a municipal sanitary sewer along eastern shoreline. Persistent wintertime high bacteria levels were eliminated by residents dispersing migratory gulls in 1999. Data indicates projects are beginning to result in improving water quality.

Location: Just south of the Gore St. and Tampa Ave. intersection.